

Expertise in Diagnostic Solutions  
to keep you in prime health forever



Expertise, Experience, Excellence

Air-conditioned offices, a cafeteria serving wholesome meals and a state-of-the-art gym in-house and one would think that poor employee health is corporate history. Nothing is farther from the truth. As an executive yourself, you are no stranger to what life as a professional entails. Sedentary lifestyles, hectic schedules and impending deadlines diminish good health until before it's too late. And the repercussions to your organization in terms of lost man-hours, lower productivity and dipping morale could be immense. So, in today's competitive environment the initiative remains stronger than ever to cultivate a resilient workforce.

A recent study in the USA indicates that companies lose more than 10 billion US Dollars due to unwell employees. They also lose over 15% of their annual working hours due to illness in their work force.

Employees of the corporate sector in India are at greater risk when it comes to health related issues. This is simply because an average employee spends 10-12 hours each day at work and has no real health maintenance and preventive care solutions available readily.

Balancing health and professional life needn't be the tightrope walk it appears. With corporate health check-up package for executives, your organization can ensure that personnel health is given the priority it deserves at the corporate level. Companies can select from a range of dedicated health check-up packages that best satisfy their particular requirements.



## WHY CORPORATE HEALTH CHECK PACKAGES?

### Why is there a need for a corporate health check-up?

Stress and general negligence are a part of daily life and, more so of, the fast-paced corporate life. Common with punishing schedules and hectic lifestyles, little time and effort actually go into the pursuit of good health and its maintenance.

With the advent of antibiotics and vaccinations infectious diseases have been conquered. However, with changes in life style other diseases like diabetes, hypertension, obesity, and heart diseases etc. are affecting the urban Indian population. Most of these diseases are "Silent" and only way to prevent them is early detection.

Corporate health-check up programs designed to assess and monitor the health status of executives while advising preventive health measures.



### How frequently health check up need to be done?

For executives between 30 and 40 years of age, corporate health check up is recommended every alternate year. Whereas for executives above 40 years of age, corporate health check up is recommended every successive year. Some tests may be required at more frequent intervals and may depend on the results of additional tests. Corporate health check up plan is designed to create greater awareness of the health risks posed in a corporate environment and the action that can be taken to alleviate them. Fidelity diagnostics offers companies the choice to select from an exhaustive range of body function tests and tailor-made health check packages that suit them perfectly.

## FIDELITY DIAGNOSTICS PRIVATE LIMITED

A medical diagnostics service provider, Fidelity Diagnostics has a strong focus on providing high tech medical imaging and diagnostics services so as that enable early detection and treatment of variety of diseases. Excellence and accuracy in diagnostics is the cornerstone of our service. To better accommodate the needs of patients and physicians, Fidelity Diagnostics offers.



- 24x7 running facilities
- All diagnostic services in radiology and pathology are under one roof
- Highly qualified, research oriented and experienced medical doctors
- Well defined processes to ensure highest quality of reports
- Rapid report turnaround on most investigations
- Huge waiting lounge
- Prompt scheduling
- Competitive pricing



## FIDELITY GROUP OF COMPANIES

Fidelity is a diversified business group deeply motivated by its commitment to healthcare and create value for Indian society. Our group has three subsidiaries:



### Synapse Labs Pvt Ltd ([www.synapselabs.com](http://www.synapselabs.com)):

Through our Clinical research company, we provide services to global pharmaceutical companies and focus our efforts in validating novel drugs to cure a variety of health conditions.

### Fidelity Life Sciences Pvt. Ltd. ([www.fidelitylifesciences.com](http://www.fidelitylifesciences.com)):

Through our pharmaceutical company that is having strong portfolio of cardiac and anti-diabetic products and a world class WHO-GMP approved manufacturing facilities, we seek to alleviate and cure people from debilitating diseases.



### Fidelity Diagnostics Pvt. Ltd. ([www.fidelitydiagnostics.com](http://www.fidelitydiagnostics.com)):

Through this chain of diagnostic centres, we bring quality medical imaging technology to people so as to enable early detection and treatment of a variety of medical ailments.

As the Founder of Fidelity Group, Dr. Pramod is instrumental in defining strategies for the growth of the company by developing new services & entering new markets. He has extensive experience in general management, corporate finance and strategic planning in healthcare industry. He is a serial entrepreneur and has diversified in healthcare business in different verticals (clinical research, pharmaceuticals and medical diagnostics). He had commenced his career with senior management positions in companies like USV, Cipla and Lupin after achieving a degree in medicine from B. J. Medical College, Pune. Till date he has more than 12 years of rich and vibrant experience in healthcare, pharmaceutical and clinical research domains. His writings have found commendable presence in various national and international medical journals.

### Our Vision



“ Fidelity Diagnostics will be the recognized leader in medical imaging, setting the standard for patient care, customer service, and team member satisfaction. We aspire to be the first-choice of healthcare providers for a broad range of diagnostic needs. ”

### Our Mission



“ Our mission is to create and provide medical imaging solutions throughout India. Working in partnership with hospitals and physicians, we would strive to provide exceptional patient care and customer satisfaction. ”

### Our Values



“ We are committed to being a customer-focused organization whose work environment is characterized by quality, integrity and ethics, respect, teamwork, and accountability. ”



## INFRASTRUCTURE AND FACILITIES

Fidelity Diagnostics has always been at the forefront of technology, using the latest top-of-the-line equipments and exacting quality standards to deliver "higher standards in health care"

We have continuously invested in advanced diagnostic systems sourced from world leaders in their respective fields. Our investments in advanced IT systems facilitate across the board access of cases and facilities for online reporting.

### Infrastructure:

Fidelity diagnostics has exclusive centres designed with a patient-friendly ambience to create the ideal setting for patients undergoing a diagnosis or medical check up. All examinations are conducted in private screening rooms for your privacy. With patient convenience and comfort in mind, the centre is able to conduct medical tests and furnish a complete medical report for interpretation by a Doctor within a quick turnaround time.

The surroundings and personal attention at the Fidelity Diagnostics centres remind our clients more of a five-star resort than a medical center. All the procedures you request are arranged for you in advance. From the Center's personal amenities to the caliber and attitude of the professional medical staff-from the personally prepared meals to the transportation to specialized appointments - we think you'll find them all superb.

**Fidelity Diagnostics has plans to set up such 20 quality medical diagnostics facilities across cities in Maharashtra, Gujarat and Karnataka over period of next 5 years. The way forward for us will be multiple centres across India, each with high-quality technology, superb service and ambience so that one does not feel like they are in a medical setting.**



## FACILITIES:

### ► Radiology:

MRI 1.5 Tesla (Siemens Magnetom Avanto and Siemens Magnetom Essenza)

Multislice Spiral CT (Siemens Somatom Emotion)

Digital X-Ray (GE GE DX 300 attached to Agfa CR system of Agfa Healthcare)

Ultrasound and peripheral doppler (GE Voluson 730 Pro)

### ► Cardiology and others:

2D Echo and Colour Doppler (GE Voluson 730 Pro)

Stress Test (GE Marquette)

ECG (GE MAC 500)

PFT (NDD)

### ► Pathology:

Fully Automated, Random access, Biochemistry Analyser, **Cobas c 111** : Roche Diagnostics, Germany

Fully Automated Electro-Chemiluminescence Immuno-Assay Analyser (ECLIA), **Cobas e 411** : Roche Diagnostics, Germany

Fully Automated 3-part Cell counter, **KX-21** : Sysmex, Japan

ELISA reader, **Bio-Rad ELISA** : Bio-Rad, USA

Electrolyte Analyser, **AVL 9180** : Roche Diagnostics, Germany

4 Channel viscosity based Coagulometer, **STA-Start 4** : Diagnostica Stago, France

Fully Automated Random Access Urine Analyser, **Cobas U 411** : Roche Diagnostics, Germany



SOMATOM Emotion MULTISLICE SPIRAL CT  
**Safest Scanner in this class**

MAGNETOM Avanto 1.5 Tesla MRI  
**The first Tim System**





## Stress Test/ Treadmill Test



## Digital X-Ray/ Radiography



## USG and Doppler



## ECG



## Spirometry



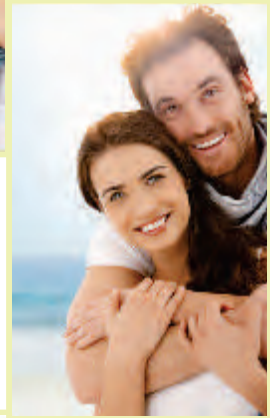
# HEALTH CHECK-UP PROFILES



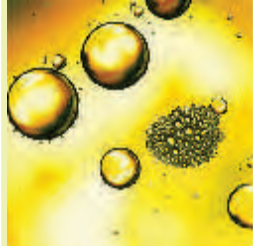
**HAPPY HEART**  
PROFILE



**PRE-NATAL**  
PROFILE



**PRE-MARITAL**  
PROFILE



**EXTENDED LIPID**  
PROFILE

**HYPERTENSION**  
PROFILE



**LIPID** PROFILE



**PRE-EMPLOYMENT**  
PROFILE

**DIABETIC**  
PROFILE



**ARTHRITIS**  
PROFILE



**OBESITY** PROFILE

## SAVE MONEY, SAVE LIFE, SAVE TAX



Get a tax waiver of up to ₹ 5,000 /-  
on Preventive Health Checkup

\* Applicable from April 2012 as per Section 80D of IT rules





# CORPORATE HEALTH CHECK PACKAGES AT FIDELITY DIAGNOSTICS:

## Pre-Employment Check Ups

Pre-employment check ups are required to cover occupational and safety hazards at workplace and to ensure that the selected candidate is medically fit for the job.



### Pre-Employment Profile

- **Blood and Urine Tests** - Complete Blood Count and ESR, Fasting Blood Sugar, Blood Urea Nitrogen, SGPT, Urine Routine
- **ECG**
- **Chest X-ray**
- **Medical Check-up and Counselling by Physician**



## Annual Health Check Ups

Fidelity has a team of qualified and experienced doctors and paramedical staff with CRM executives to offer standard and customized annual health check up packages to corporate, schools & institutions. With our unique packages you'll appreciate the ease and efficiency offered by our Centre. As a leader in the early detection of serious illnesses, we have the expertise and motivation to provide you with the comprehensive testing and attention you need.



# FIDELITY HEALTH CHECK PACKAGE

**BASIC**  
₹ 3900/-

## Medical Checkup by Physician

(A consultation with the doctor where medical history and physical examination is undertaken.)

## Gynaecological Consultation (For Women)

(A gynaecology consultation for women regarding contraception, conception, pregnancy and testing for presence of certain diseases.)

## Pathology for General Body Health

(This includes a set of tests that will detect any disturbance in internal functioning of your body & help you so as to ensure that you live a healthy life. These tests are helpful in providing valuable information about the state of your health. For early diagnosis of onset of these diseases we conduct the following tests:)

### Haemogram

### Blood Group

### Urine Test

### Blood Sugar (Random)

**Renal Function Tests:** Blood Urea, Serum Creatinine, Serum Uric Acid

**Liver Function Tests:** Serum Bilirubin, SGOT, SGPT, Serum Alkaline Phosphatase, Serum proteins

**Heart Disease Tests (Lipid Profile):** Triglycerides, Cholesterol, LDL, VLDL, HDL, LDL/HDL ratio, Total Cholesterol /HDL ratio

## Chest X-ray

(A simple procedure that scans the lungs and heart for diseases and irregularities.)

## ECG

(Electrocardiogram is a simple and routinely conducted test which maps the electrical activity of the heart. It is indicative of the condition of blood supply to the heart.)

## 2-D Echocardiography

(It is a detailed analysis of the heart on various parameters such as valves, heart chambers, cardiac capacity, congenital defects etc.)

## USG - Abdomen and Pelvis

(This helps to determine any abnormality in the abdominal organs and detect stones and inflammation of the liver, gall bladder, spleen, pancreas and kidneys.)

## Report review and Counselling by the Physician

(A final assessment of all your test reports by an experienced doctor. The doctor will give you a analysis of your test results and suggest corrective measures as needed. It is advisable to keep a proper follow up of whatever advised, with your family doctor.)



# FIDELITY HEALTH CHECK PACKAGE



## Medical Checkup by Physician

(A consultation with the doctor where medical history and physical examination is undertaken.)

## Gynaecological Consultation (For Women)

(A gynaecology consultation for women regarding contraception, conception, pregnancy and testing for presence of certain diseases.)

## Pathology for General Body Health

(This includes a set of tests that will detect any disturbance in internal functioning of your body & help you so as to ensure that you live a healthy life. These tests are helpful in providing valuable information about the state of your health. For early diagnosis of onset of these diseases we conduct the following tests:)

### Haemogram

### Blood Group

### Urine Test

### Blood Sugar (Random)

**Renal Function Tests:** Blood Urea, Serum Creatinine, Serum Uric Acid

**Liver Function Tests:** Serum Bilirubin, SGOT, SGPT, Serum Alkaline Phosphatase, Serum proteins

**Heart Disease Tests (Lipid Profile):** Triglycerides, Cholesterol, LDL, VLDL, HDL, LDL/HDL ratio, Total Cholesterol/HDL ratio

## Chest X-ray

(A simple procedure that scans the lungs and heart for diseases and irregularities.)

## ECG

(Electrocardiogram is a simple and routinely conducted test which maps the electrical activity of the heart. It is indicative of the condition of blood supply to the heart.)

## 2-D Echocardiography

(It is a detailed analysis of the heart on various parameters such as valves, heart chambers, cardiac capacity, congenital defects etc.)

## USG - Abdomen and Pelvis

(This helps to determine any abnormality in the abdominal organs and detect stones and inflammation of the liver, gall bladder, spleen, pancreas and kidneys.)

## Thyroid Profile: T3, T4 and TSH

(This helps to determine the abnormality in thyroid glands)

## Iron Deficiency Profile: Serum Iron, Total Iron Binding Capacity, % Transferrin Saturation

(Deficiency in Iron is important to detect, as it can lead to anemia, if detected timely, can be easily treated with adequate diet and medication.)

## Electrolytes Profile: Sodium, Potassium, Chloride

(The balance of sodium, potassium and chloride in the blood is a good indicator of how well the kidneys and heart are functioning. Knowing which electrolytes are out of balance can help your doctor determine a course of treatment.)

## Pulmonary Function test: Spirometry

(It consists of a series of easy-to-perform breathing exercises that check lung conditions.)

## PAP Smear/Transvaginal Sonography (Females only)

(Critical in detection of cervical cancer, which is completely curable if detected early. TVS is done to obtain complete evaluation of the pelvic area.)

## Sono-Mammography (Females only)

(Sono mammography is sonography of the breasts and is conducted to detect any lumps in the breast.)

## Stress Test (All Adult Males and Females above 45 years)

(To check the possibility of blockages in the blood vessels which supply pure blood to the heart.)

## Report review and Counselling by the Physician

(A final assessment of all your test reports by an experienced doctor. The doctor will give you a analysis of your test results and suggest corrective measures as needed. It is advisable to keep a proper follow up of whatever advised, with your family doctor.)



# FIDELITY HEALTH CHECK PACKAGE



**DELUXE**  
₹ 11,900/-

## Medical Checkup by Physician

(A consultation with the doctor where medical history and physical examination is undertaken.)

---

## Gynaecological Consultation (For Women)

(A gynaecology consultation for women regarding contraception, conception, pregnancy and testing for presence of certain diseases.)

---

## Pathology for General Body Health

(This includes a set of tests that will detect any disturbance in internal functioning of your body & help you so as to ensure that you live a healthy life. These tests are helpful in providing valuable information about the state of your health. For early diagnosis of onset of these diseases we conduct the following tests:)

### Haemogram

### Blood Group

### Urine Test

### Blood Sugar (Random)

**Renal Function Tests:** Blood Urea, Serum Creatinine, Serum Uric Acid

**Liver Function Tests:** Serum Bilirubin, SGOT, SGPT, Serum Alkaline Phosphatase, Serum proteins

**Heart Disease Tests (Lipid Profile):** Triglycerides, Cholesterol, LDL, VLDL, HDL, LDL/HDL ratio, Total Cholesterol/ HDL ratio

---

## Chest X-ray

(A simple procedure that scans the lungs and heart for diseases and irregularities.)

---

## ECG

(Electrocardiogram is a simple and routinely conducted test which maps the electrical activity of the heart. It is indicative of the condition of blood supply to the heart.)

---

## 2-D Echocardiography

(It is a detailed analysis of the heart on various parameters such as valves, heart chambers, cardiac capacity, congenital defects etc.)

---

## USG - Abdomen and Pelvis

(This helps to determine any abnormality in the abdominal organs and detect stones and inflammation of the liver, gall bladder, spleen, pancreas and kidneys.)

---

## Thyroid Profile: T3, T4 and TSH

(This helps to determine the abnormality in thyroid glands)

---

## Iron Deficiency Profile: Serum Iron, Total Iron Binding Capacity, % Transferrin Saturation

(Deficiency in Iron is important to detect, as it can lead to anemia, if detected timely, can be easily treated with adequate diet and medication.)

---

## Electrolytes Profile: Sodium, Potassium, Chloride

(The balance of sodium, potassium and chloride in the blood is a good indicator of how well the kidneys and heart are functioning. Knowing which electrolytes are out of balance can help your doctor determine a course of treatment.)

---

## Pulmonary Function test: Spirometry

(It consists of a series of easy-to-perform breathing exercises that check lung conditions.)

---

## PAP Smear/Transvaginal Sonography (Females only)

(Critical in detection of cervical cancer, which is completely curable if detected early. TVS is done to obtain complete evaluation of the pelvic area.)

### **Sono-Mammography (Females only)**

(Sono mammography is sonography of the breasts and is conducted to detect any lumps in the breast.)

---

### **Stress Test (All Adult Males and Females above 45 years)**

(To check the possibility of blockages in the blood vessels which supply pure blood to the heart.)

---

### **Carotid Colour Doppler**

(This is most frequently performed to find stenosis or narrowing of the carotid artery, a condition which gradually increases the risk of a heart attack.)

---

### **Specialised Tests**

#### **Glycosylated Haemoglobin (HbA1C)**

(HbA1C test provides a broader picture of your overall glucose control in last 90 days.)

#### **Vitamin D and Vitamin B12**

(To detect vitamin B12 and Vitamin D deficiency in body)

---

### **Coronary Risk Markers**

#### **APO A1, APO B**

(Indicators for risk of coronary artery disease.)

#### **Lpa**

(Predictor for Heart Attack)

---

### **Cancer Risk Markers**

#### **PSA for Prostate Cancer (Males only)**

(To detect prostate cancer and other prostate abnormalities.)

#### **CA 125 for Ovarian Cancer (Females only)**

(To detect ovarian cancer)

---

### **Report review and Counselling by the Physician**

(A final assessment of all your test reports by an experienced doctor. The doctor will give you a analysis of your test results and suggest corrective measures as needed. It is advisable to keep a proper follow up of whatever advised, with your family doctor.)



# FIDELITY HEALTH CHECK PACKAGE



**TITANIUM**  
₹ 31,900 /-

## Medical Checkup by Physician

(A consultation with the doctor where medical history and physical examination is undertaken.)

---

## Gynaecological Consultation (For Women)

(A gynaecology consultation for women regarding contraception, conception, pregnancy and testing for presence of certain diseases.)

---

## Pathology for General Body Health

(This includes a set of tests that will detect any disturbance in internal functioning of your body & help you so as to ensure that you live a healthy life. These tests are helpful in providing valuable information about the state of your health. For early diagnosis of onset of these diseases we conduct the following tests:)

**Haemogram**

**Blood Group**

**Urine Test**

**Blood Sugar (Random)**

**Renal Function Tests:** Blood Urea, Serum Creatinine, Serum Uric Acid

**Liver Function Tests:** Serum Bilirubin, SGOT, SGPT, Serum Alkaline Phosphatase, Serum proteins

**Heart Disease Tests (Lipid Profile):** Triglycerides, Cholesterol, LDL, VLDL, HDL, LDL/HDL ratio, Total Cholesterol/ HDL ratio

---

## Chest X-ray

(A simple procedure that scans the lungs and heart for diseases and irregularities.)

---

## ECG

(Electrocardiogram is a simple and routinely conducted test which maps the electrical activity of the heart. It is indicative of the condition of blood supply to the heart.)

---

## 2-D Echocardiography

(It is a detailed analysis of the heart on various parameters such as valves, heart chambers, cardiac capacity, congenital defects etc.)

---

## USG-Abdomen and Pelvis

(This helps to determine any abnormality in the abdominal organs and detect stones and inflammation of the liver, gall bladder, spleen, pancreas and kidneys.)

---

## Thyroid Profile: T3, T4 and TSH

(This helps to determine the abnormality in thyroid glands)

---

## Iron Deficiency Profile: Serum Iron, Total Iron Binding Capacity, % Transferrin Saturation

(Deficiency in Iron is important to detect, as it can lead to anemia, if detected timely, can be easily treated with adequate diet and medication.)

---

## Electrolytes Profile: Sodium, Potassium, Chloride

(The balance of sodium, potassium and chloride in the blood is a good indicator of how well the kidneys and heart are functioning. Knowing which electrolytes are out of balance can help your doctor determine a course of treatment.)

---

## Pulmonary Function test: Spirometry

(It consists of a series of easy-to-perform breathing exercises that check lung conditions.)

---

## PAP Smear/Transvaginal Sonography (Females only)

(Critical in detection of cervical cancer, which is completely curable if detected early. TVS is done to obtain complete evaluation of the pelvic area.)

---

## Sono-mammography (Females only)

(Sono mammography is sonography of the breasts and is conducted to detect any lumps in the breast.)

---



## Stress Test (All Adult Males and Females above 45 years)

(To check the possibility of blockages in the blood vessels which supply pure blood to the heart.)

---

## Carotid Colour Doppler

(This is most frequently performed to find stenosis or narrowing of the carotid artery, a condition which gradually increases the risk of a heart attack.)

---

## Specialised Tests

### Glycosylated Haemoglobin (HbA1C)

(HbA1C test provides a broader picture of your overall glucose control in last 90 days.)

**Vitamin D and Vitamin B12** (To detect vitamin B12 and Vitamin D deficiency in body)

---

## Coronary Risk Markers

**APO A1, APO B** (Indicators for risk of coronary artery disease.)

**Lpa** (Predictor for Heart Attack)

---

## Cancer Risk Markers

**PSA for Prostate Cancer (Males only)** (To detect prostate cancer and other prostate abnormalities.)

**CA 125 for Ovarian Cancer (Females only)** (To detect ovarian cancer)

---

## Whole Body MRI

(Whole Body MRI is a screening tool used to detect life threatening conditions for patients who may appear to be healthy. We use state-of-the-art, ultra fast, high resolution MRIs (magnetic resonance imaging) that are safe, accurate and do not involve contrast or x-ray radiation. In less than 90 minutes, 2000+ detailed images are collected and then screened for the early detection of lesions, tumour's anomalies and such life-threatening illnesses as aneurysm, stroke, cancer and vascular disease.

These sophisticated images allow our radiologists to identify suspect areas with a high degree of probability, thus increasing the potential for the early detection of life-threatening and treatable conditions. This comprehensive screening could definitely save your life or the life of a loved one. Early detection does make the difference! Fidelity's preventive screening program (Whole Body MRI) is a wise investment.)

**MRI-Brain** (Gives us information about any abnormality in the brain tissues like attacks of fainting, dizziness which have gone unnoticed, persistent headaches besides any abnormal silent space occupying lesions.)

**MRI-Screening of intracranial vessels** (Detects narrowing, blockages, and growths in vessels of the brain which are silent. This test is critical to prevent fatal conditions like brain haemorrhage or infarct.)

**MRI-Screening of neck vessels (carotid)** (Evaluates the condition of blood vessels in the neck. By early detection, any narrowing of vessels can be treated in preventing complications in the future.)

**MRI-Spine screening** (Evaluates the condition of the lumbar and cervical spine. This test is essential in proper diagnosis and treatment of abnormalities of spine which is a common lifestyle ailment now days.)

**MRI-Knee Joint** (Knee pain is a common complaint especially in senior citizens. If MRI done at an early age, it could diagnose knee problems which when treated would minimise/limit damage to the ligaments and essential connective tissues of the joint.)

**MRI-Abdomen** (Evaluates vital organs of abdomen. This test is essential to detect abdominal aneurysms, kidney tumours, pancreatic cancer and inflammatory diseases, liver lesions, gallstones, abnormalities of gall bladder and bile ducts etc.)

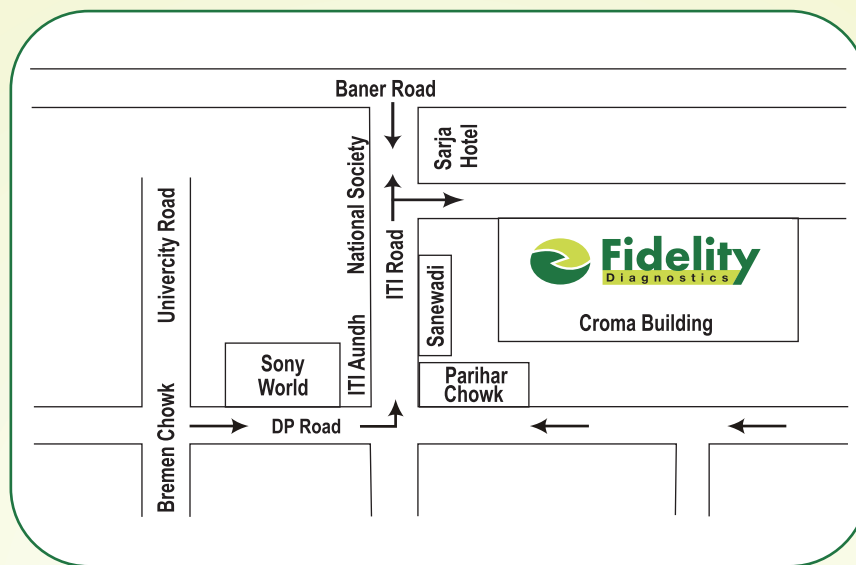
**MRI-Pelvis** (Evaluates vital organs of pelvis and reproductive system. Ovarian cancer is often asymptomatic until its later stages and is associated with high mortality when discovered at an advanced stage. Early detection is critical to survival improvement.)

---

## Report review and Counselling by the Physician

(A final assessment of all your test reports by an experienced doctor.

The doctor will give you a analysis of your test results and suggest corrective measures as needed. It is advisable to keep a proper follow up of whatever advised, with your family doctor.)



Expertise, Experience, Excellence

### Fidelity Diagnostics Private Limited

**AUNDH:** S. No. 127/2B, NSG IT Park, I.T.I. Road, Above Croma, Aundh, Pune-411007.  
Tel: (020) 6560 3560/61, 8600057771/2

**FATIMA NAGAR:** Inamdar Hospital Campus, Lower Ground Floor, S. No. 15. Fatima Nagar, Pune-411040.  
Tel: (020) 66812405 / 2306 , 8888259588 , 8600057771 / 2.

[www.fidelitydiagnostics.com](http://www.fidelitydiagnostics.com)